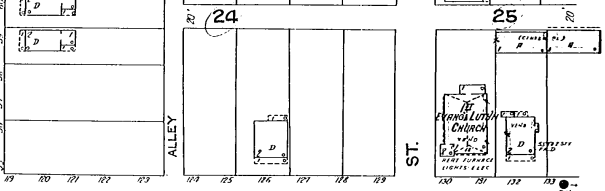
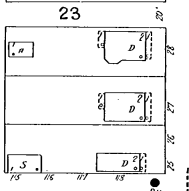
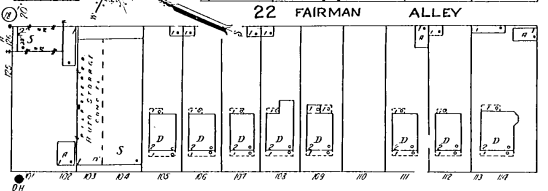
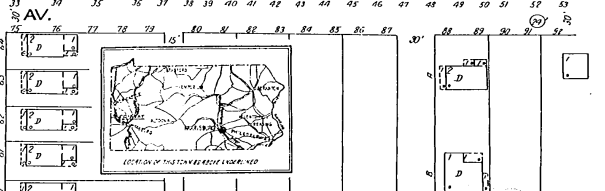
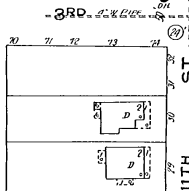
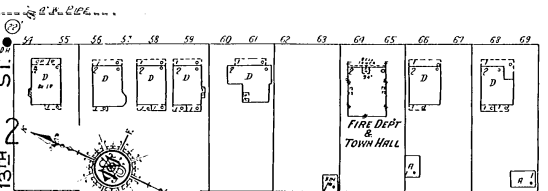
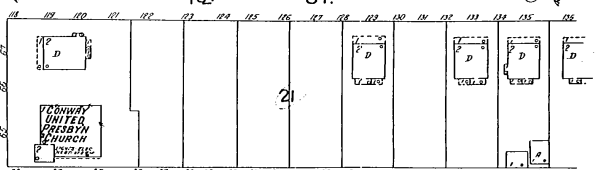
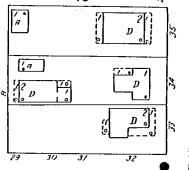
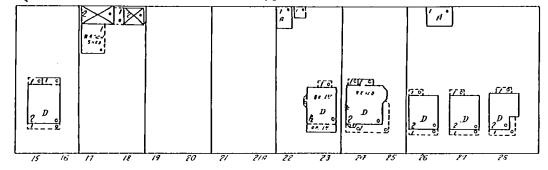
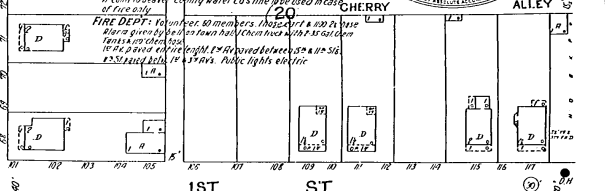
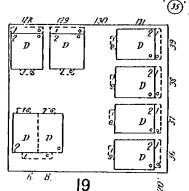
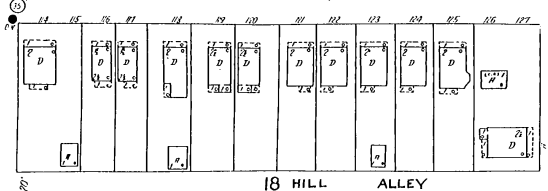


Water Facilities

Water supply is furnished by the town pumping & gravity system. Supply from the Conowing Creek at bottom of 21st. Pump station at bottom of 21st. Main line to 1st St. from 1st St. to 1st St. at bottom of 21st. Main line to 1st St. from 1st St. to 1st St. at bottom of 21st.

FIRE DEPT. - Volunteer 40 members. Includes a hook, hose, pumper, and other equipment. Station at bottom of 21st. Public lights electric.



KEY

CONCRETE

BRICK

WOOD

IRON

STEEL

GLASS

PAINT

PLASTER

CEILING

FLOORING

ROOFING

FOUNDATION

WATER

SEWER

ELECTRIC

TELEPHONE

RAILROAD

STREET

ALLEY

AVENUE

BOULEVARD

DRIVE

TRAIL

ROAD

PATH

WALK

BRIDGE

TUNNEL

VIADUCT

UNDERPASS

OVERPASS

RAILROAD

STREET

ALLEY

AVENUE

BOULEVARD

DRIVE

TRAIL

ROAD

PATH

WALK

BRIDGE

TUNNEL

VIADUCT

UNDERPASS

OVERPASS

30 Scale of Feet