

CONWAY BOROUGH

www.conwaypa.org

April 2020



801 First Avenue, Conway, PA 15027 724-869-5550

Pennsylvania Primary Election Day Tuesday, June 2, 2020

Polls are open 7am to 8pm

Mail-In Ballot applications are available on-line or at the Secretary's Office and are due at the Courthouse no later than May 26.

Downtown voting station is in the Council Chambers of the Conway Municipal Building, 801 First Avenue, Conway.

Uptown voting station is in the CVFD Banquet Hall, 900 South Gross Street, Conway.

To find your voting station, go to <https://www.pavoterservices.pa.gov/Pages/PollingPlaceInfo.aspx>

Conway Borough Secretary's Office is closed to foot traffic while COVID-19 Restrictions are in place.

Please call 724-869-5550 or email rmicija@conwaypa.org for questions, forms, applications, and requests.

BILL PAYMENTS

Conway Borough is now accepting payment of Water/Sewer and Refuse bills by VISA, Master Card, Discover credit cards, or e-check.

Credit or Debit card payment will include a separate 2.95% or \$2.50 minimum service fee. E-check payment will include an additional \$2.00 service fee. Fees are accessed by the credit card processor, not by the Borough of Conway.

Payments may be made on-line through a link on the borough website Water and Sewer page, or directly at [www](http://www.conwaypa.org).

Secretary's Office will be closed on the following dates:

Friday, April 10th – Good Friday

Monday, May 25th – Memorial Day

Thursday, July 3rd – Independence Day



Conway Borough Memorial Day Parade

Monday, May 25th

-Starts at the Conway Municipal Building at 11:30 a.m. and will end with the Memorial Ceremony at the War Memorial Park, corner of 11th Street and 3rd Avenue.

Please come and honor our fallen heroes.

DIRECTORY

Conway Post Office - 724-869-2328
1216 3rd Avenue, Conway

CVFD Banquet Hall - 724-869-4844
900 South Gross Street, Conway

Valley Waste Service, Inc. - 724-843-9373
Beaver Falls, PA

District Justice Ed Howe - 724-774-0840
559 3rd Avenue, Freedom, PA 15042

Representative Rob Matzie - 724-266-7774
1240 Merchant Street, Ambridge, PA 15003

Senator Elder Vogel Jr. - 724-774-0444
488 Adams Street, Rochester, PA 15074

Congressman Conor Lamb - 724-206-4860
3468 Brodhead Rd., Monaca, PA 15061

Senator Robert Casey 202-224-6324

Senator Pat Toomey 202-224-4254

REFUSE/RECYCLING PICKUP

Plastic bags and glass will not be accepted in recycling. Grocery-type bags may be recycled at most stores. Glass is to go in trash.

Mattress/box springs: For the worker's protection, wrap items in plastic and tape securely closed with duct or packing tape.

Limbs/branches: must be securely tied in bundles not exceeding 3" in diameter and 48" in length and weighing no more than 40 lbs.

Call Valley Waste Service at 724-843-9373 two weeks in advance to schedule an appointment for electronic device pickup or Household Hazardous Waste.

Next HHW pickup is September 8.

REMINDER - CURB YOUR DOGS!

Dog waste must be removed from sidewalks, streets and non-owner yards by dog-walker immediately. **Dog Waste Stations** are available at the Municipal Building Park, Buttermore Park, Gratty Park, and the Ballfields.

- Conway Borough Code prohibits animals (dogs AND cats) running at large.
Animals must be on a leash and under control at all times in public.

Dogs are not permitted at Gratty Park or on the ball fields.

Approach strange animals with caution.

Please help to curb the feral cat population:

Do not feed stray animals.

Keep your pet cats indoors.

WHEN CUTTING YOUR GRASS

PLEASE REMEMBER:

- Grass is not to exceed six (6) inches in height.
- Grass clippings are defined as refuse, and are NOT to be blown into the street, and are NOT to be swept down into the storm drains.
- Do not dump bags of grass onto vacant properties, or onto mulch piles. Rotting grass in the summer produces a noxious odor and is a violation of the nuisance ordinance, which is punishable by a fine.



PARKING ADVISORY:

The parking of trailers, including travel trailers, pickup coaches, motorized homes and boat trailers is prohibited on Borough Streets and alleys.

Parking is limited to the interior of automobile garages or to that portion of the lot beyond the public street right-of-way.



On all Borough streets except Route 65
PLEASE DRIVE SAFELY

Spring Is Here!

Borough Permits are required for:

- Fences, sheds, garages/carports and swimming pools
- Porches and decks with roofs
- Decks that are 31" or more above ground level
- Retaining walls higher than 47"
- **Dumpsters and Storage Containers** placed on Borough streets
- Door-to-door **soliciting** (religious and political activities are exempt)
- **Temporary signs** – you also must have permission from the property owner to place a sign if it is not on your property.
It is illegal to post signs on telephone/streetlight poles per PA State laws.

This list is not all-inclusive. Other permits may be necessary.

Permit applications are available on-line and at the Borough Secretary's Office.

GET INVOLVED!

Conway Volunteer Fire Department

New Members Welcome!

Stop by the Station located at 900 South Gross Street on the 2nd

Tuesday of the month at 7:30pm.

Become a Junior Member - 14 to 18 years of age.

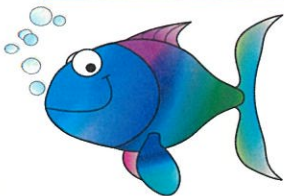
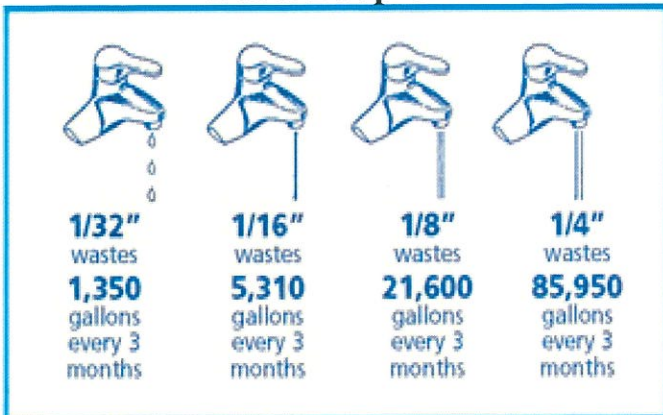
Regular Member - over 18 years of age.

Social Members - help with non-firefighting activities.

**PREVENT CLOGS – NEVER FLUSH WIPES
SAVE WATER, SAVE MONEY**

Drippy faucets, toilets that run intermittently, and other minor plumbing repairs can be costly if ignored.

Water Drop Chart



Preserve our Waterways

PLEASE TAKE NOTICE!!!

Storm sewers on the streets are a direct line to the Ohio River, which is a drinking water source for many. Rain water flowing through the storm sewers is not treated at the Sewage Plant.

NEVER dump oil, wastes, or sweep grass clippings into a storm sewer.

GRATTY PARK PAVILION RENTAL

The pavilion at Gratty Park is available for reservation. Applications may be picked up at the Borough Secretary’s Office or downloaded from the Borough website.

Fee is \$75.00 for Borough residents, \$100.00 for non-residents. A \$25.00 refundable deposit is included in the fee. Pavilion has water and electric available. Reservations are not final until deposit is received at Borough office.

Conway Borough maintains four parks and playgrounds for local children to enjoy and to play safely off of the streets:

- **Buttermore Park** on 3rd Avenue at Fowler Street
- **Catherine Drive Park** at the end of Catherine Drive
- **Gratty Park** on Gross Street
- **Municipal Building Park** at 9th & 2nd Ave*

-All four parks have basketball hoops for practicing shots or for a pick-up game.

-Gratty Park also has a handicap swing, and a Skate Park for skateboards, roller blades, and BMX bikes.

Please observe all of the park rules and dispose of any trash in the proper receptacles.

Please note - Conway Borough cannot routinely sanitize the playground equipment as recommended by the Center for Disease Control during the COVID-19 crisis. Social Distancing guidelines list playgrounds as places to avoid for your children’s safety. Parks may still be used for outdoor exercise.

CURFEW

Conway Ordinance No. 440

adopted 12/14/1992, states that:

“It shall be unlawful for any minor (person less than 18 years of age) to remain in or upon any public place in the Borough of Conway after hours (from 10:00pm to 6:00am) unless accompanied by a parent or upon an errand or other legitimate business directed by written consent of a parent or unless engaged in gainful, lawful employment after hours, in which case said minor shall carry written identification and evidence of employment.”

Reminder - Borough Parks close at Dusk

COMMUNITY CORNER

my2020census.gov

The 2020 Census is happening now. Your response is important to your local community, and is required by law.

Homes should have received their invitation to respond between March 12-20. The questionnaire can be completed online, by phone, or by mail. The official mailings will include detailed information and a Census ID for completing the Census online. The Census WILL NEVER ASK FOR: your social security number; your bank account or credit card numbers; money or donations; anything on behalf of a political party or candidate. If someone visits your home to collect a response make sure that they have valid U.S. Dept. of Commerce ID badge. If you have questions about their identity you can call 844-330-2020 to speak with a Census Bureau representative.

ALL SOUTHWEST PA RESIDENTS
Can find help and a range of social services by dialing **2-1-1**.

Food assistance can be found through the Salvation Army (724-378-0875) and

Faith Restorations (724-709-8666)

Transportation is available through

Faith in Action (1-800-207-6701)

Mental Health assistance can be found at

Beaver County Crisis Line

(724-371-8060)



DO THE FIVE

Help stop coronavirus

- 1HANDS** Wash them often
- 2ELBOW** Cough into it
- 3FACE** Don't touch it
- 4SPACE** Keep safe distance
- 5HOME** Stay if you can

CONWAY RECREATION COMMITTEE

Conway Community Day

Saturday, August 1

Visit the Conway Recreation Committee Facebook page for up to date information or e-mail

conwayrecommittee@gmail.com

YMCA SUMMER PLAYGROUND PROGRAM

Weekly themes, sports activities, arts and crafts, special events, and swim lessons. Children will receive a free snack and lunch during the program hours.

Ed Gratty Park - June 15 - July 24

Monday through Friday

10:00 am - 2:00 pm

Children ages 5 -12

CONWAY COMMUNITY YARD SALE

The Conway Recreation Committee is holding their annual Community Yard Sale on **Saturday, June 20 from 8:00 am - 1:00 pm**. The Recreation Committee is printing a **map listing all of the houses that are participating in the yard sale**. Maps will be available to print starting June 3rd on the conwayrec.webs.com website, or you may pick up a printed copy at the Conway Municipal Building. If you are interested in having your address on the map, please fill out this form and **MAIL it with your donation by Wednesday, May 6, 2020 to the address below**. We are not responsible for forms which are sent after the deadline or not mailed to the P.O. Box.

Thank You. Patty Then

ConwayRecCommittee@gmail.com

Name: _____

_____ Address on Map - \$2.00

Address: _____

Conway Recreation Committee, P.O. Box 82, Conway, PA 15027